

**Bond&FoxChapter6.pdf: Bond & Fox (2006) Applying the Rasch Model ...
Chapter 6: CAIN Computer Anxiety Index**

Bond & Fox CAIN Computer Anxiety Index data

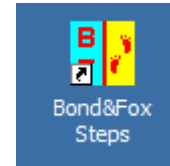
Skip down to **Let's remind ourselves about the CAIN data** if Bond&FoxChapter6.txt and this Tutorial are already displaying on your screen. *Please print out the Tutorial for reference.*

*Please install **Bond&FoxSteps** on your computer by double-clicking on **Bond&FoxStepsInstall.exe** on your CD*

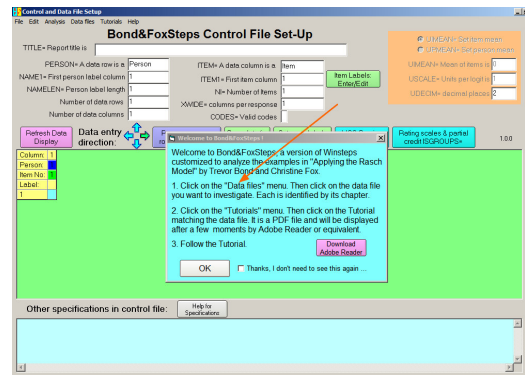
```

27 23345363635515124556665541
17 55552315352252555226442642
17 3122615161661521155655551
17 21216261635615413566565651
17 11116161626616111666666661
17 11116161626616111666666661
17 23442352536513112655663652
17 23445362626616423556654531
17 12342461616516222563533423
27 21354454564354565456525663
17 22344352545525545456542553
27 64344435342333434434534434
17 31116261316616412666666631
27 23254555542235334355632523
    
```

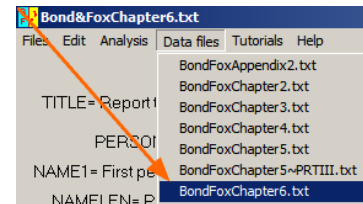
Launch Bond&FoxSteps from the short-cut on your desktop or from the Windows "Start" menu.



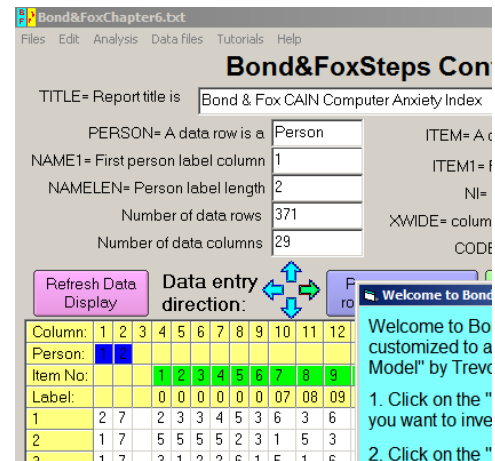
The Bond&FoxSteps Control File Set-Up Screen displays. We are going to follow the instructions in the blue box.



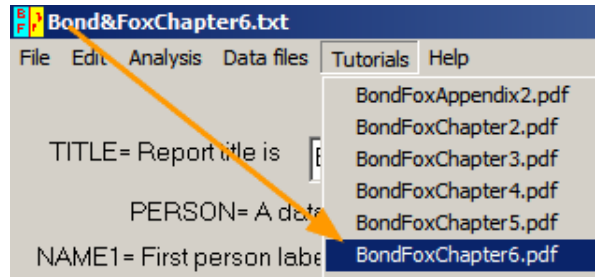
Click on the "Data files" menu.
Click on Bond&FoxChapter6.txt



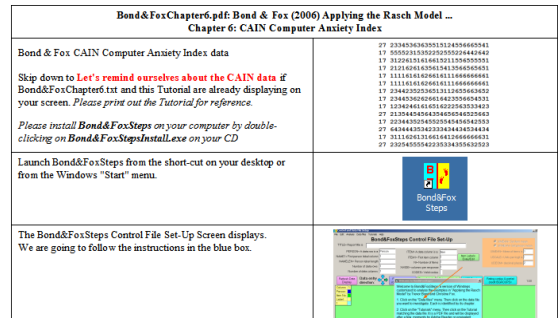
The Bond&FoxChapter6.txt control instructions and data are displayed on your screen.



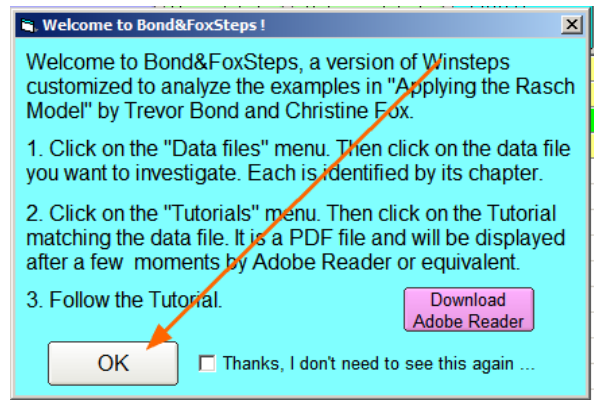
Click on the "Tutorials" menu.
 Click on "Bond&FoxChapter6.pdf" - this is the Tutorial matching Bond&FoxChapter6.txt



This PDF file displays. It is what you are reading now. *Please print out the Tutorial for reference.*

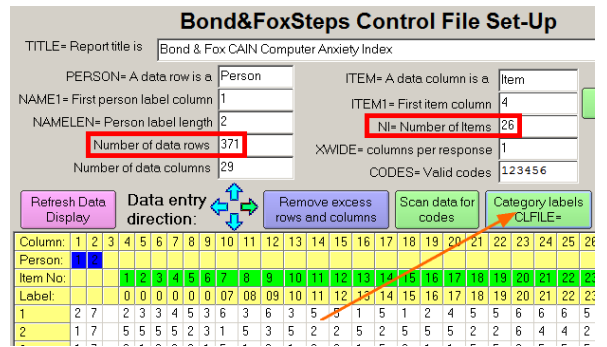


Now step-by-step through this Tutorial ...
 Click "OK" on the Welcome dialog



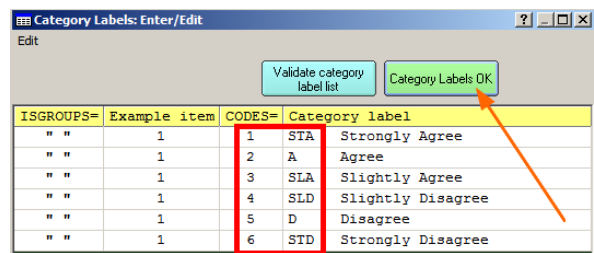
Let's remind ourselves about the CAIN. It consists of 26 items about computer anxiety administered to 371 persons. It has a 6 category rating scale.

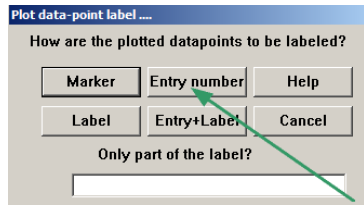
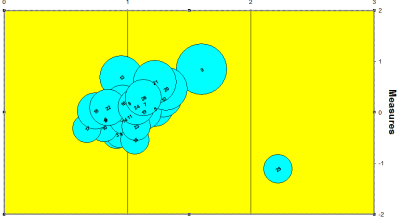
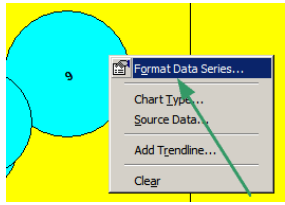
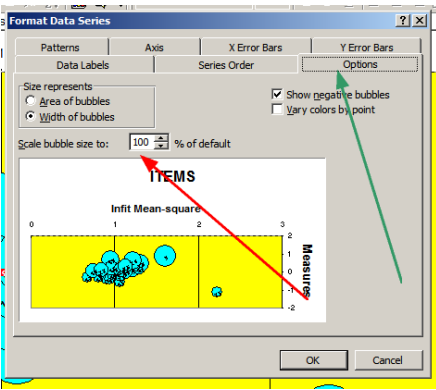
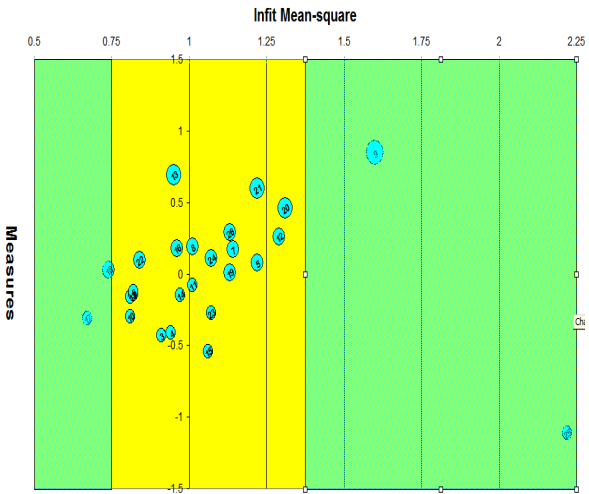
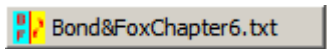
Let's look at the rating scale category names:
 Click on "Category labels CLFILE="



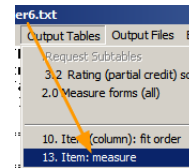
The 6 categories go from 1 - Strongly Agree to 6 - Strongly Disagree. So a lower score means more agreement that you are generally **not** anxious around computers. So high disagreement means high scores and so high attitude measures which mean a lot of anxiety. Low scores and so low measures mean little anxiety.

Click on "Category Labels OK"



<p>"Plot data-point label"? Click on "Entry number"</p>	
<p>After a few moments, Excel displays a Path bubble plot</p>	
<p>Let's reduce size of the Bubbles (these are initially set automatically by Excel) Right-click on a bubble. Click on "Format Data Series" (not "Format Data Labels")</p>	
<p>Click on "Options" Table Change "Scale bubble size to" 20% of default. Click "OK"</p>	
<p>You can also use other Excel functions to produce a bubble plot resembling the artist-drawn plot in Bond & Fox. The hand-drawn thresholds shown in Bond & Fox Fig.6.2, are not shown in this plot. We'll come back to the threshold issue later on.</p> <p>What does it tell us? In this analysis, higher scores on CAIN mean more computer anxiety. An item near the bottom of the pathway is item 15. An item near the top is item 13. Many more people can endorse item 13 "Enjoy", but it's much more difficult to endorse item 15 "Important" (higher rating). So item 13 addresses something indicating little anxiety, but item 15 indicates something much more likely to provoke anxiety. (low rating) with</p>	
<p>Go back to Bond&FoxChapter6.txt by clicking on the Taskbar</p>	

Bond & Fox Table 6.2 contains some item statistics.
 Click on "Output Tables"
 Click on "13 Item: measure"



The Table 13 displays.
 The item measures, errors, and fit statistics are shown.

TABLE 13.1 Bond & Fox CAIN Computer Anxiety Index 20029WS.TXT Aug 23 2:04 2006
 INPUT: 371 Persons 26 Items MEASURED: 371 Persons 26 Items 6 CATS 1.0.0
 Person: REAL SEP.: 2.28 REL.: .84 ... Item: REAL SEP.: 7.69 REL.: .98

At one end:
 Item 13 "Enjoy" is a forward-oriented item with a low raw score.
 So this sample rated it low, agreeing they enjoyed computers.
 Item 9 "Dump" is a reverse-oriented item with a low score. So this sample rated it high, disagreeing they would dump their computers.

Item STATISTICS: MEASURE ORDER

ENTRY	TOTAL	MODEL	INFIT	OUTFIT	IPMEA	EXACT	MATCH	Item				
NUMBER	SCORE	COUNT	MEASURE	S.E.	MNSQ	ZSTD	MNSQ	ZSTD	CORR.	OBS	EXP	
9	560	371	.85	.07	1.60	4.6	1.51	3.71	.36	60.9	54.9	09R Dump
13	595	371	.69	.06	.95	-4.1	.74	-2.41	.52	56.9	48.6	13 Enjoy
21	617	371	.60	.06	1.22	2.1	1.07	.71	.39	50.1	46.6	21R Unlearnable
20	656	371	.46	.06	1.31	3.0	1.39	3.31	.34	45.3	43.2	20R Nervous
26	713	371	.29	.05	1.13	1.4	1.13	1.31	.41	41.0	40.1	26 Useful
12	726	371	.26	.05	1.29	3.1	1.19	1.91	.47	39.6	39.0	12R Avoid
8	750	371	.19	.05	1.01	-1.1	.92	-0.81	.51	40.7	37.9	08 Fun
16	756	371	.18	.05	.96	-5.1	.93	-7.1	.49	42.9	37.8	16 Learning
7	760	371	.17	.05	1.14	1.7	1.20	2.01	.48	38.8	37.8	07R Negative
24	783	371	.11	.05	1.07	.9	1.05	.61	.47	41.8	36.9	24R Intimidated
22	788	371	.10	.05	.84	-2.0	.76	-2.81	.55	46.6	36.7	22R Complicated
5	795	371	.08	.05	1.22	2.6	1.16	1.71	.44	36.7	36.2	05R Not enjoy
18	819	371	.03	.05	.74	-3.6	.71	-3.61	.59	43.9	35.2	18R Trouble
19	829	371	.01	.05	1.13	1.6	1.15	1.71	.49	35.0	35.0	19R Uncomfortable
11	874	371	-.08	.04	1.01	-1.1	1.08	.91	.50	32.1	33.9	11R Not use
6	893	371	-.12	.04	.82	-2.5	.84	-2.01	.43	42.0	33.1	06 Easier
2	902	371	-.14	.04	.82	-2.5	.89	-1.41	.39	39.1	33.1	02 Time-sever
14	907	371	-.15	.04	.97	-4.1	.96	-5.1	.50	36.1	32.7	14R Excessive
1	913	371	-.16	.04	.81	-2.7	1.04	.51	.29	39.9	32.6	01 Available
23	971	371	-.27	.04	1.07	1.0	1.16	2.01	.49	26.1	30.9	23R Unhappy
10	989	371	-.30	.04	.81	-2.9	.90	-1.31	.51	38.0	30.5	10 Anticipate
17	996	371	-.31	.04	.67	-5.4	.67	-4.71	.55	38.8	30.5	17 Satisfy
4	1055	371	-.41	.04	.94	-9.1	1.00	.01	.42	29.9	29.1	04 Better
3	1069	371	-.43	.04	.91	-1.4	1.06	.91	.38	35.6	28.9	03 Concentrate
15	1133	371	-.54	.04	1.06	1.0	1.06	.81	.51	25.3	27.9	15 Important
25	1502	371	-1.11	.04	2.22	9.9	2.55	9.91	.10	19.1	27.5	25R Overwhelming

At the other end:
 Item 15 "Important" is a forward-oriented item with a high raw score.
 So this sample rated it high, disagreeing that computers are important to them/
 Item 25 "Overwhelming" is a reverse-oriented item with a low score.
 So this sample rated it high, agreeing that they feel computers are overwhelming.

Looking down the columns of fit indices you will note that the CAIN items suffer from badly underfitting "noisy" items, 9 and 25, and a few overfitting "too predictable" items, 1,10,17 &18.

Bond & Fox Table 6.2 also reports that the "Taus", i.e., the Rasch rating scale structure parameters, **are the same for every item**. To see them,
 Click on the "Output Tables" pull-down menu
 Click on "3.2 Rating (partial credit) scale".



Table 3.2 displays.
 The Taus correspond to the "STRUCTURE MEASURE" (Rasch-Andrich thresholds). Their standard "Errors" (S.E.) are in the next column.

CATEGORY	STRUCTURE MEASURE	S.E.	SCORE-TO-MEASURE	50% CUM.	COHERENCE (ESTIM)	
LABEL	MEASURE	S.E.	AT	CAT.	---2ONE--- PROBABILITY M-> C->M DISCR	
1	NONE		(-2.18)	-INF	-1.51	838 32%
2		.75	-.86	-1.51	-.49	-1.17 358 63% 1.42
3		.21	-.21	-.49	.04	-.38 288 40% 1.06
4		.21	.27	.04	.54	.07 208 18% .84
5		.19	.87	.54	1.44	.42 268 9% .42
6		.56	2.05	1.44	+INF	1.06 408 1% .23

Bond & Fox Fig. 6.4
 Click on the "Output Tables" pull-down menu
 Click on "12 Item: map".

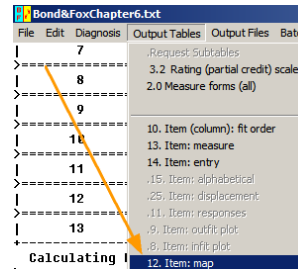


Table 12.2 shows the item hierarchy. This is the construct that defines the latent variable. At the top "play"-type items "enjoy", "fun". At the bottom are work-type items, "important", "time-saving". At the top are minor negatives: "nervous", "avoid". At the bottom are major negatives: "unhappy", "overwhelming". The trend from up the latent variable goes from computers are a necessary burden (so provoking anxiety) to computers are a joy (and so not a source of anxiety).

TABLE 12.2 Bond & Fox CAIN Computer Anxiety Index ZOU298WS.TXT Aug 23 2:04 20
 INPUT: 371 Persons 26 Items MEASURED: 371 Persons 26 Items 6 CATS 1.

```

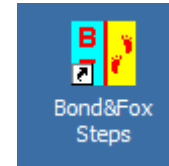
Persons MAP OF Items
<more><rare>
1
  +
  |T 09R Dump
  | 13 Enjoy
  # TJS 20R Nervous
  # | 07R Negative
  | 16 Learning
  | 26 Useful
0
  ##### +M 05R Not enjoy
  | 19R Uncomfortable
  .##### S| 01 Available
  | 10 Anticipate
  ##### |S 03 Conceptualize
  | 15 Important
  ##### M|T
  +
-1
  .##### +
  | 25R Overwhelming
  ##### S|
  .## |
  .# |
-2
  .# T+
  |
  
```

Close all open and output windows

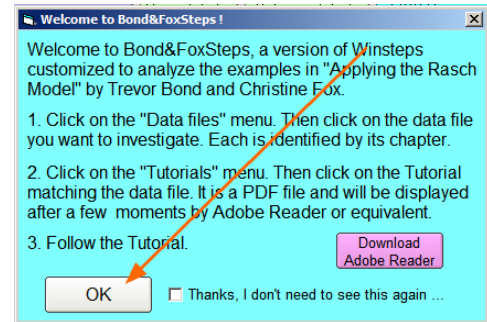


The CAIN was reduced from 26 items to 20 items by deleting items. Let's do the 20 item analysis ...

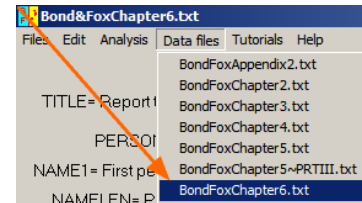
Launch Bond&FoxSteps from the short-cut on your desktop or from the Windows "Start" menu.



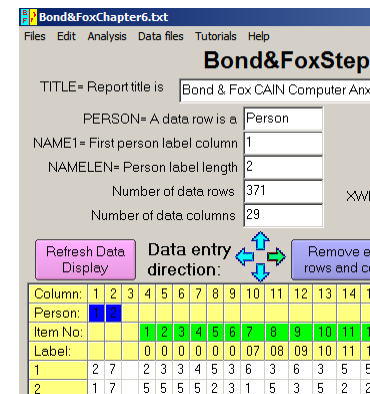
Click "OK" on the Welcome dialog



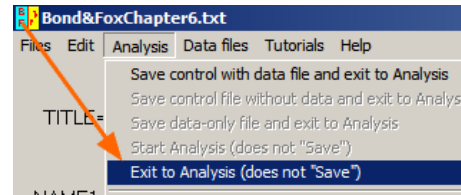
1. Click on the "Data files" menu.
 Click on Bond&FoxChapter6.txt (Chapter 6 example)



The Bond&FoxChapter6.txt control instructions and data are displayed on your screen.



Let's perform the Analysis of these data.
 Click on "Analysis" menu
 Click on "Exit to Analysis (does not Save)"
 - we don't want to make any changes at this point ...

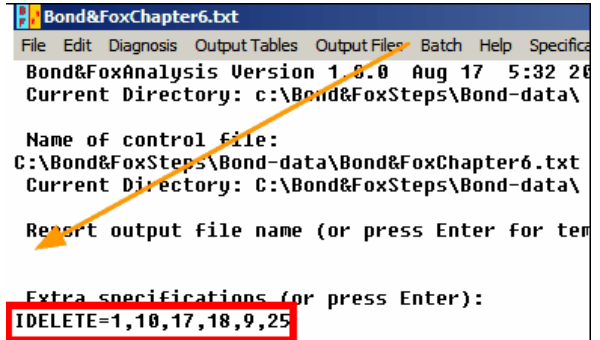


Bond&FoxSteps - Analysis phase - launches.

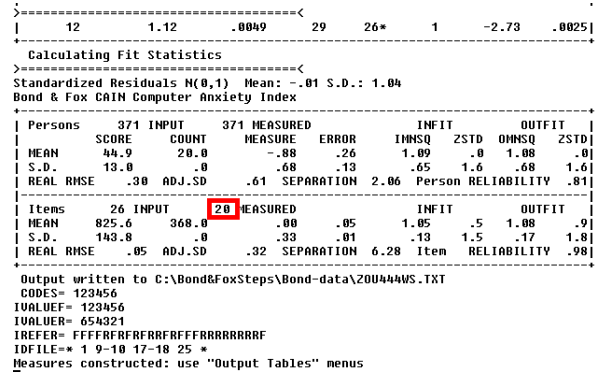
"Report output file name"?
 Press your Enter key

"Extra specifications"?
DELETE=1,10,17,18,9,25 (you can copy and paste from here)
 Press your Enter key

The CAIN is reduced from 26 items to 20 items by deleting items.
 1,10,17,18, 9, 25.



The analysis runs.
 The summary statistics displayed on your Analysis screen report:
 20 Items measured



Bond & Fox Fig. 6.3 - this reports equal-probability Rasch-Andrich thresholds.

Click on "Output Tables" menu
 Click on "2.0 Measure forms (all)"

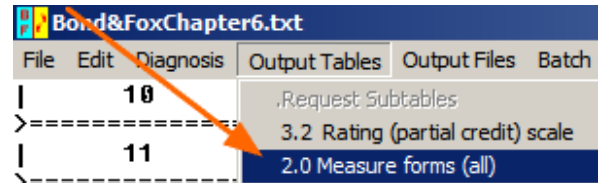
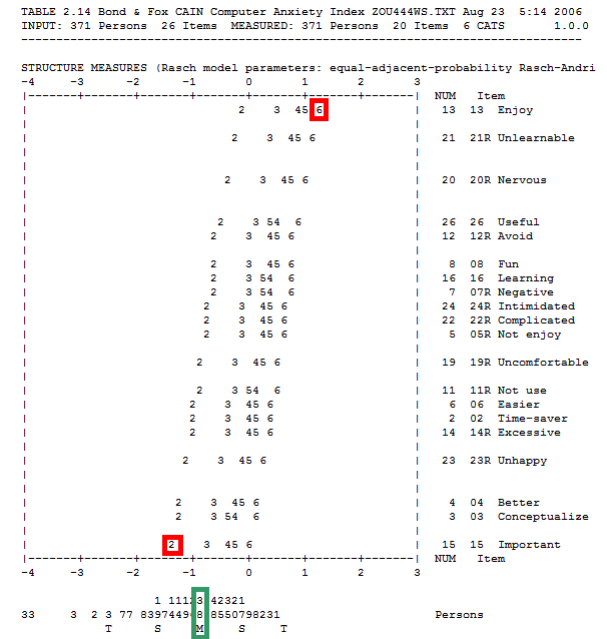


Table 2 displays.
 Scroll down to Table 2.14
 This shows the Taus, the Rasch-Andrich thresholds of equal probability between adjacent thresholds.

At the top, "6" on Item 13, "Enjoy", is the location where categories 5 and 6 are equally probable for that item.
 At the bottom, "2" on Item "Important", is the location where categories 1 and 2 are equally probably for that item.

Beneath the plot is the person distribution. Numbers are read vertically. The Mean of the distribution, M, is at -0.9 logits. There are 38 persons close to the mean.



Bond & Fox Table 6.3 shows some of the individual person statistics for the 20-item CAIN.
 On your Analysis screen,
 Click on the "Output Tables" pull-down menu
 Click on "18. Person: entry".

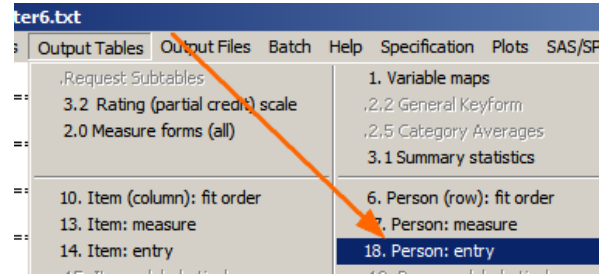


Table 18 displays.
 The "Total Score" differs from Bond & Fox. One reason is that the data are reported as 1-6. But Bond & Fox recode them to 0-5.

TABLE 18.1 Bond & Fox CAIN Computer Anxiety
 INPUT: 371 Persons 26 Items MEASURED: 371

 Person: REAL SEP.: 2.06 REL.: .81 ... Item

Person STATISTICS: ENTRY ORDER

ENTRY NUMBER	TOTAL SCORE	COUNT	MEASURE	MODEL S.E.	IN: MNSQ
1	39	20	-.97	.22	.57
2	84	20	.40	.17	1.00
3	30	20	-1.58	.31	.39
4	29	20	-1.68	.33	.93

Close all open windows

